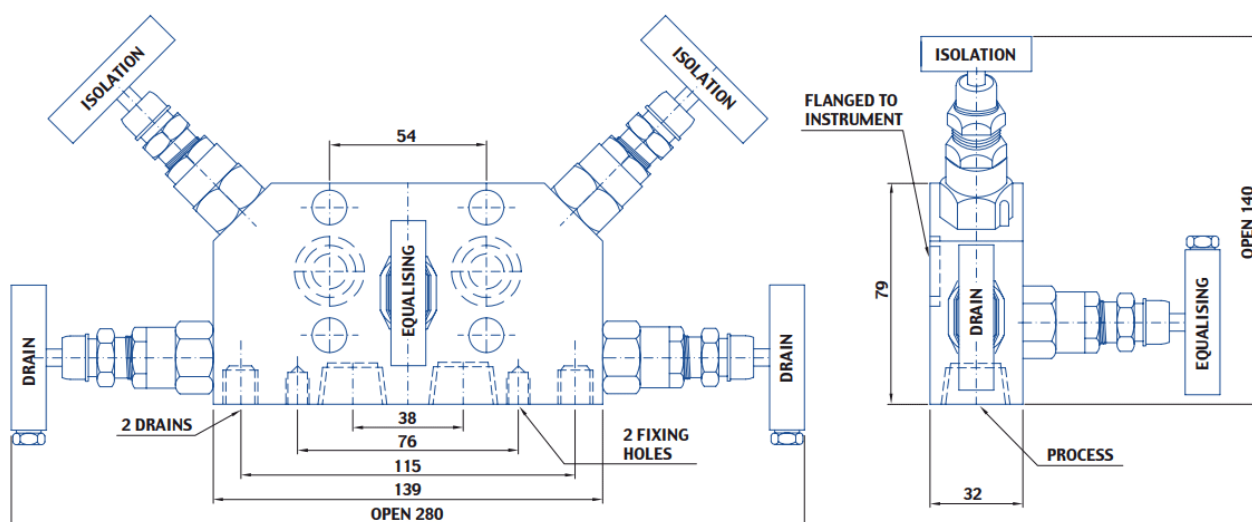
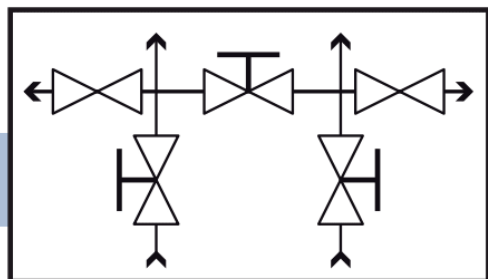


5D4



## 5 Valves Manifold – Direct Mounting

**Process port:** 1/2" NPT Female

**Instrument Port:** Flanged (Direct Mounting)

**Drain Port:** 1/4" NPT Female

**Drain Port Plug:** Yes

**Max Pressure:** 6000psi

**Material:** AISI 316/L

**Gland Packing:** Graphoil (for temperature up to 180 °C)

Alternative configurations are available to increase temperature and pressure ratings. Please feel free to discuss with us

[Contact us Now](#)

[Request a Quote](#)

[Order Online](#)