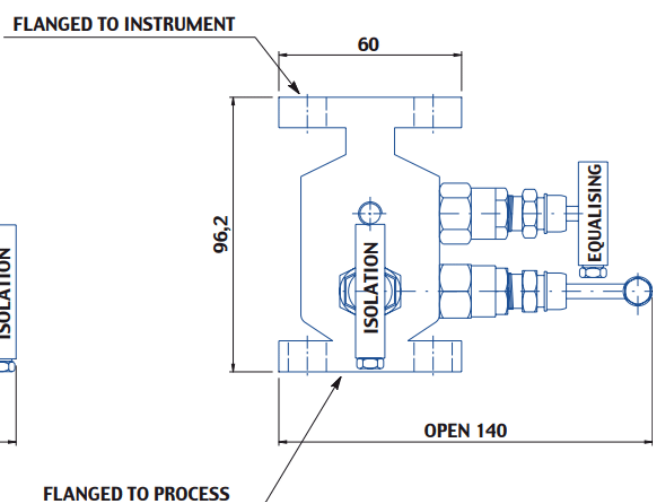
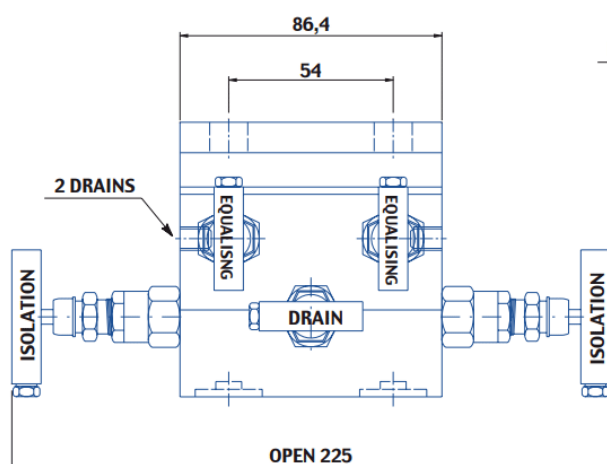
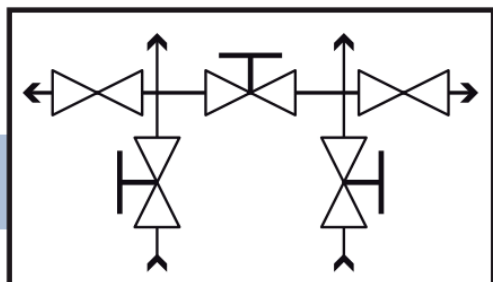


INSTRUMENT MANIFOLD



5D3



5 Valves Manifold – Direct Mounting

Process port: Flanged (Co-planer)

Instrument Port: Flanged (Direct Mounting)

Drain Port: 1/4" NPT Female

Drain Port Plug: Yes

Max Pressure: 6000psi

Material: AISI 316/L

Gland Packing: PTFE (for temperature up to 180 °C)

Alternative configurations are available to increase temperature and pressure ratings. Please feel free to discuss with us

[Contact us Now](#)

[Request a Quote](#)

[Order Online](#)

Instrowest Pty Ltd

(08) 9500 9120
sales@instrowest.com.au
www.instrowest.com.au